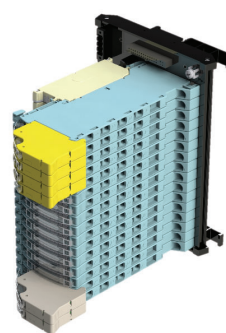
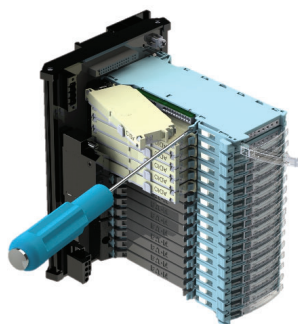
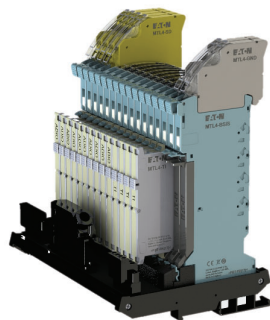
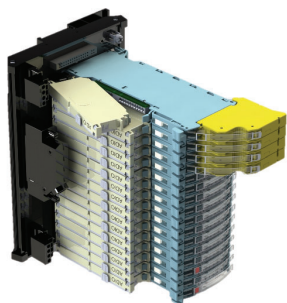


The new standard in marshalling

CROUSE-HINDS
SERIES

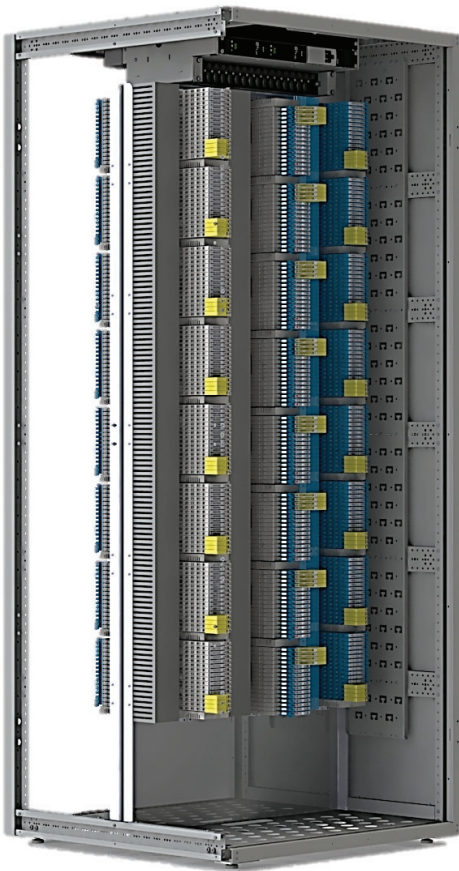
MTL SUM5™ Smart Universal Marshalling Solution



EATON

Powering Business Worldwide

Minimize CapEx and maximize investment return



Introducing the MTL SUM5™, a universal marshalling and smart cabinet solution

Eaton's Crouse-Hinds Division now has an innovative and reliable marshalling solution that can reduce DCS cabinet requirements by 30 to 50%, significantly decreasing project infrastructure costs.

With the MTL SUM5, **we've combined five marshalling functions into ONE configurable and standard design.**

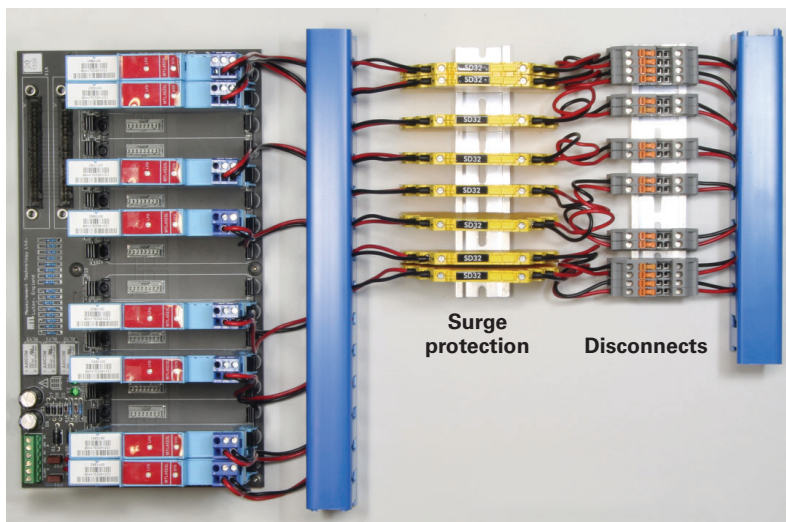
- Intrinsically safe isolators
- Signal conditioning
- Relay interfaces
- Surge protection
- Loop disconnect

The MTL SUM5 can typically reduce the number of marshalling component types on a bill of material from 20 to 7, simplifying procurement, commissioning and maintenance.

Plus, with the SUM5's modular design, late changes in I/O or surge can be easily accommodated at minimum cost and time.

Reduce installation costs while saving valuable space in your control room

With the MTL SUM5 you can go from this:



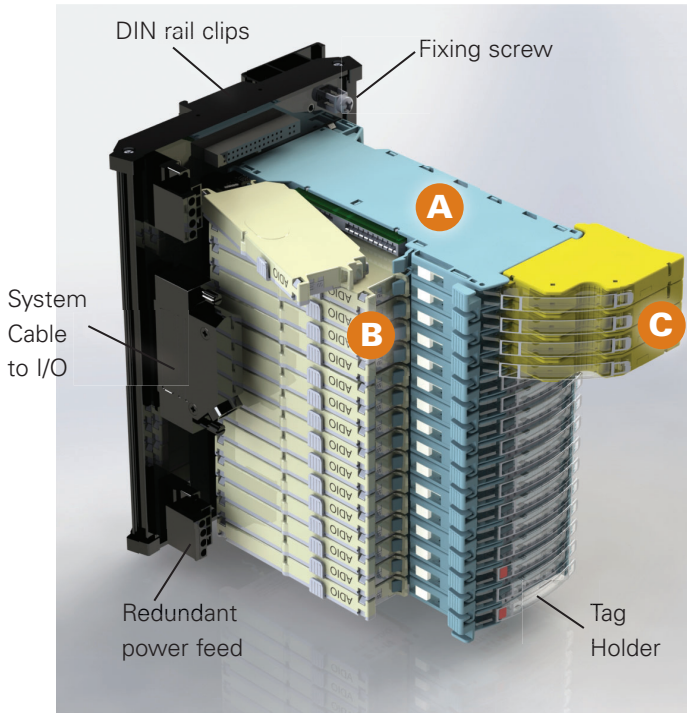
Intrinsic safety isolators

To this:



Each cabinet removed saves 3m² in the rack room and 270 kg in weight!

MTL SUM5 Smart Universal Marshalling Solution - Design Features

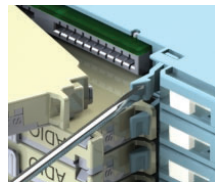


Modular and configurable design reduces costs, optimizes productivity, and increases process up-time

- 5 marshalling functions in ONE design simplifies commissioning, start-up, maintenance and documentation
- Eliminates up to 8 connections per channel, the most common fault in marshalling cabinets
- Comprehensive diagnostics notify you when service is required
- Intelligent modules with LED indicators simplify commissioning and troubleshooting
- Components can be easily replaced. Replacement isolator automatically assumes channel configuration
- Extended -40°C to +70°C operating temperature range
- Designed for ATEX, IECEx and North American certification requirements

A Rugged Field Terminal Assembly (FTA)

- Available as intrinsically safe or general purpose versions
- 16 channel carrier with rugged field wiring connections
- Knife disconnect to isolate all four field terminal connections
- Clear plastic tag holder for channel identification



B Isolator Module

- Plugs into IS Field Termination Assembly for intrinsically safe applications or general purpose FTA for signal conditioning applications
- Configurable module for AI, AO, DI, and DO applications. Temperature input module for thermocouple, RTD and mV applications
- Functions can be mixed on the carrier
- Single channel module provides channel-to-channel isolation
- 3 port isolation
- Status and configuration LEDs to simplify commissioning and troubleshooting
- USB connection via carrier for simple configuration with PC

C Surge Protection Module

- Proven Hybrid GDT and suppression circuit with fast response and high surge current rating protects marshalling cabinet equipment, I/O, controller, etc.
- Surge protection tested to 10kA
- Add or replace surge protection without changes to the cabinet or wiring
- Uninterrupted signals during module installation and removal
- Surge modules can be easily added after the system is installed and commissioned, saving up-front costs when surge requirements may not be fully defined

**U.S. (Global Headquarters):
Eaton's Crouse-Hinds Division**
1201 Wolf Street
Syracuse, NY 13208

(866) 764-5454
FAX: (315) 477-5179
FAX Orders Only:
(866) 653-0640

CrouseCustomerCTR@Eaton.com

For more information:
If further assistance is
required, please contact
an authorised MTL
Distributor, Sales Office,
or Customer Service
Department

AUSTRALIA

MTL Instruments Pty Ltd,
10 Kent Road, Mascot, New South Wales, 2020, Australia
Tel: +61 1300 308 374 Fax: +61 1300 308 463
E-mail: mtlsalesanz@eaton.com

BeNeLux

MTL Instruments BV
Ambacht 6, 5301 KW Zaltbommel
The Netherlands
Tel: +31 (0)418 570290 Fax: +31 (0)418 541044
E-mail: mtl.benelux@eaton.com

CHINA

Cooper Electric (Shanghai) Co. Ltd
955 Shengli Road, Heqing Industrial Park
Pudong New Area, Shanghai 201201
Tel: +86 21 2899 3817 Fax: +86 21 2899 3992
E-mail: mtl-cn@eaton.com

FRANCE

MTL Instruments sarl,
7 rue des Rosières, 69410 Champagne au Mont d'Or
France
Tel: +33 (0)4 37 46 16 53 Fax: +33 (0)4 37 46 17 20
E-mail: mtlfrance@eaton.com

GERMANY

MTL Instruments GmbH,
Heinrich-Hertz-Str. 12, 50170 Kerpen, Germany
Tel: +49 (0)22 73 98 12 - 0 Fax: +49 (0)22 73 98 12 - 2 00
E-mail: csckerpen@eaton.com

INDIA

MTL India,
No.36, Nehru Street, Off Old Mahabalipuram Road
Sholinganallur, Chennai - 600 119, India
Tel: +91 (0) 44 24501660 /24501857 Fax: +91 (0) 44 24501463
E-mail: mtlindiasales@eaton.com

ITALY

MTL Italia srl,
Via San Bovio, 3, 20090 Segrate, Milano, Italy
Tel: +39 02 959501 Fax: +39 02 95950759
E-mail: chmninfo@eaton.com

JAPAN

Cooper Crouse-Hinds Japan KK,
MT Building 3F, 2-7-5 Shiba Daimon, Minato-ku,
Tokyo, Japan 105-0012
Tel: +81 (0)3 6430 3128 Fax: +81 (0)3 6430 3129
E-mail: mtl-jp@eaton.com

NORWAY

Norex AS
Fekjan 7c, Postboks 147,
N-1378 Nesbru, Norway
Tel: +47 66 77 43 80 Fax: +47 66 84 55 33
E-mail: info@norex.no

RUSSIA

Cooper Industries Russia LLC
Elektrozavodskaya Str 33
Building 4
Moscow 107076, Russia
Tel: +7 (495) 981 3770 Fax: +7 (495) 981 3771
E-mail: mtlrussia@eaton.com

SINGAPORE

Cooper Crouse-Hinds Pte Ltd
100G Pasir Panjang Road, Interlocal Centre
#07-08 Singapore 118523
Tel: +65 6645 9888 Fax: +65 6645 9811
E-mail: sales.mtlsing@eaton.com

SOUTH KOREA

Cooper Crouse-Hinds Korea
7F Parkland Building 237-11 Nonhyun-dong Gangnam-gu,
Seoul 135-546, South Korea.
Tel: +82 6380 4805 Fax: +82 6380 4839
E-mail: mtl-korea@eaton.com

UNITED ARAB EMIRATES

Cooper Industries/Eaton Corporation
Office 205/206, 2nd Floor SJ Towers, off. Old Airport Road,
Abu Dhabi, United Arab Emirates
Tel: +971 2 44 66 840 Fax: +971 2 44 66 841
E-mail: mtlgulf@eaton.com

UNITED KINGDOM

Eaton Electric Ltd,
Great Marlings, Butterfield, Luton
Beds LU2 8DL
Tel: +44 (0)1582 723633 Fax: +44 (0)1582 422283
E-mail: mtlenquiry@eaton.com

AMERICAS

Cooper Crouse-Hinds MTL Inc.
3413 N. Sam Houston Parkway W.
Suite 200, Houston TX 77086, USA
Tel: +1 281-571-8065 Fax: +1 281-571-8069
E-mail: mtl-us-info@eaton.com

Eaton Electric Ltd,
Great Marlings, Butterfield, Luton
Beds LU2 8DL, UK.
Tel: + 44 (0)1582 723633 Fax: + 44 (0)1582 422283
E-mail: mtlenquiry@eaton.com

www.mtl-inst.com