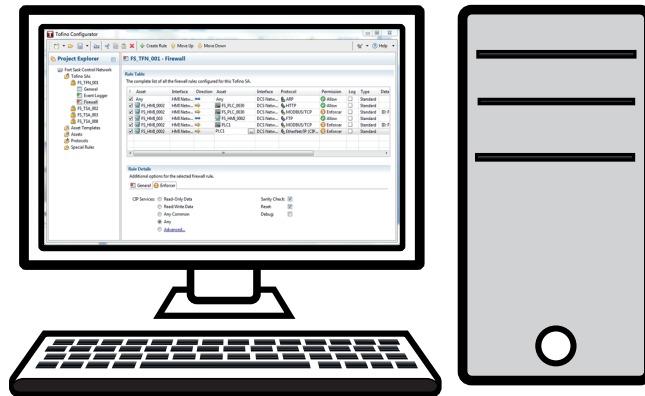


# MTL Tofino™ configurator

## Coordinates security management



### Configure and manage security for your control network from one location

Traditional security devices force you to configure them one at a time. This quickly becomes unmanageable as the number of devices increases. What's worse, this devicecentric view provides no way to see what is happening at the system level, so diagnosing and correcting security issues is timeconsuming, error-prone, and expensive.

The MTL Tofino Configurator software enables configuration of all your MTL Tofino security Appliances from one workstation.

Using the MTL Tofino configurator you can quickly create a model of your entire control system. Visual editing tools help you create, edit, and test your MTL Tofino configuration.

For quick and consistent setup, use the prebuilt asset templates for common control products to have the firewall suggest the optimum rules to protect your control system. Alternately, create your own templates to enforce corporate consistency in your firewall rules.

### Saves you money through:

- Simplifying compliance to safety and security standards.
- Reduced down time and production losses.
- Lower maintenance costs.
- Improved system reliability and stability.

### Unique capabilities:

- Intuitive Windows-based graphical user interface.
- Configure, manage, and audit all MTL Tofino Security Appliances from one workstation.
- Transfer configuration data from the application directly to the MTL Tofino security Appliances in the field.
- Easily verify the configuration of MTL Tofino Security Appliances over the network.
- Pre-defined templates for more than 125 IT and industrial communication protocols.
- Asset templates for quick and efficient creation of your plant's assets.
- Flexible security controls to tailor project access to meet your needs.

### Applications

- Process network security in oil and gas, chemicals, pulp and paper, and metals.
- SCADA security for power, water/waste water, pipelines, and transportation systems.

## FEATURES & SPECIFICATIONS

<b>Discover existing hardware</b>	Quickly build your project by scanning IP ranges to discover MTL Tofino Security Appliances already installed on your network (requires Netconnect LSM).
<b>Create security rules</b>	Create rules that specify which device may communicate and what protocols they may use. Add Enforcer Loadable Security Modules (LSMs) to provide stateful Deep Packet Inspection (DP I) to manage traffic based on high level message content. Multiple Enforcers are available for purchase with each one providing inspection for a different protocol.
<b>Test your rules</b>	Run in Test mode to check your firewall rules without causing network interruptions or configuration errors.
<b>Number of secured devices</b>	No limit. Thousands of MTL Tofino Security Appliances may be managed from a single MTL Tofino configurator workstation.
<b>Device configuration</b>	<ul style="list-style-type: none"> <li>• Network: uses secure SSH communications to configure each MTL Tofino security Appliance.</li> <li>• Manual: encrypted configuration files may be saved on a USB storage device and loaded into MTL Tofino Security Appliances via a secure USB port.</li> </ul>
<b>Security event logging</b>	Configure MTL Tofino Security Appliances to report security alerts simultaneously to remote syslog servers and local nonvolatile memory for later retrieval.
<b>Templates</b>	Over 100 preloaded asset templates for common automation products allow you to rapidly create similar assets. You can also import new templates or create your own.
<b>User privileges</b>	User identification and privileges based on your existing Windows Account Management setup provide three levels of access: View-Only, Configuration, and Administration.
<b>System requirements</b>	<ul style="list-style-type: none"> <li>• Windows XP, Windows 7 (32- and 64-bit), and Windows Server 2003, 2008, and 2008 SR2.</li> <li>• Dual-core CPU; minimum 1GB RAM, 250GB hard drive.</li> <li>• Colour monitor, minimum 1024 x 768 resolution.</li> </ul>
<b>Ordering information</b>	Part number: <b>9511-TC</b> (included at no charge with MTL Tofino orders) Name: <b>MTL Tofino™ configurator</b> Additional information: <a href="http://www.mtl-inst.com/products/cat/industrial_security/">http://www.mtl-inst.com/products/cat/industrial_security/</a>

The **MTL Tofino™ Configurator** is a component of the **MTL Tofino™ Industrial Security Solution**

### MTL Tofino Security Appliance

Hardware platform that creates Plug-n-Protect™ zones of security on control and SCADA networks



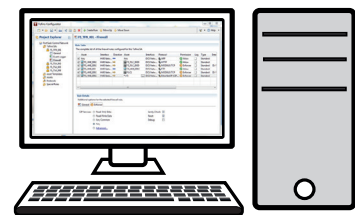
### Loadable Security Modules

Firmware modules that customize the security features of each MTL Tofino SA:

- **Firewall:** Monitors and secures industrial network traffic
- **Modbus, OPC, and EtherNet/IP Enforcers:** Ensure compliance, manage connections, and restrict ICS/SCADA commands
- **Netconnect:** Provides secure remote configuration over any IP-based network
- **Event Logger:** Reliably logs security events and alarms

### MTL Tofino Configurator

Software that provides coordinated security management of all MTL Tofino Security Appliances from one workstation or server



**Eaton Electric Limited,**  
Great Marlings, Butterfield, Luton  
Beds, LU2 8DL, UK.  
Tel: + 44 (0)1582 723633 Fax: + 44 (0)1582 422283  
E-mail: [mtlenquiry@eaton.com](mailto:mtlenquiry@eaton.com)  
[www.mtl-inst.com](http://www.mtl-inst.com)

© 2016 Eaton  
All Rights Reserved  
Publication No. EPS TC rev 2 010916  
September 2016

**EUROPE (EMEA):**  
+44 (0)1582 723633  
[mtlenquiry@eaton.com](mailto:mtlenquiry@eaton.com)

**THE AMERICAS:**  
+1 800 835 7075  
[mtl-us-info@eaton.com](mailto:mtl-us-info@eaton.com)

**ASIA-PACIFIC:**  
+65 6 645 9888  
[sales.mtlsing@eaton.com](mailto:sales.mtlsing@eaton.com)

The given data is only intended as a product description and should not be regarded as a legal warranty of properties or guarantee. In the interest of further technical developments, we reserve the right to make design changes.